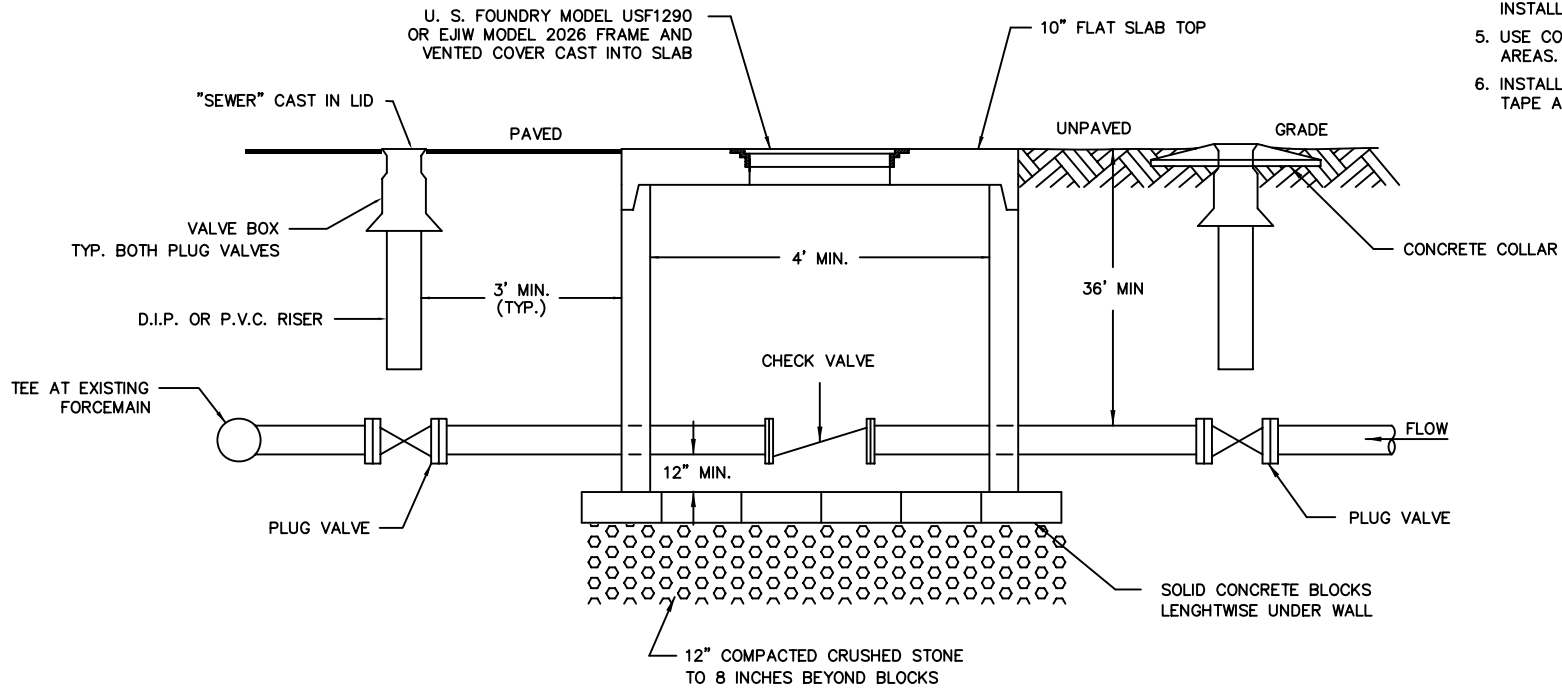


NOTES:

1. PLUG VALVES SHALL BE DEZURIK OR PRATT.
2. CHECK VALVES SHALL BE GOLDEN ANDERSON INDUSTRIES FIGURE 250-D.
3. THE WORD 'SEWER' SHALL BE ON THE VALVE BOX LIDS WITH AN ARROW INDICATING 'OPEN LEFT'.
4. SEE VALVE BOX DETAIL FOR BOX INSTALLATION REQUIREMENTS.
5. USE CONCRETE COLLAR ONLY FOR UNPAVED AREAS. SEE CONCRETE COLLAR DETAIL.
6. INSTALL TRACER WIRE AND MAGNETIC TAPE AS PER THAT DETAIL.



FORCE MAIN TO FORCE MAIN CONNECTION

CHARLESTON WATER SYSTEM		
FORCE MAIN TO FORCE MAIN CONNECTION		
APPROVED BY: CWS	DATE: APR 2006	DRAWING NO. 68
SCALE: NTS	REVISED: FEB 2010	