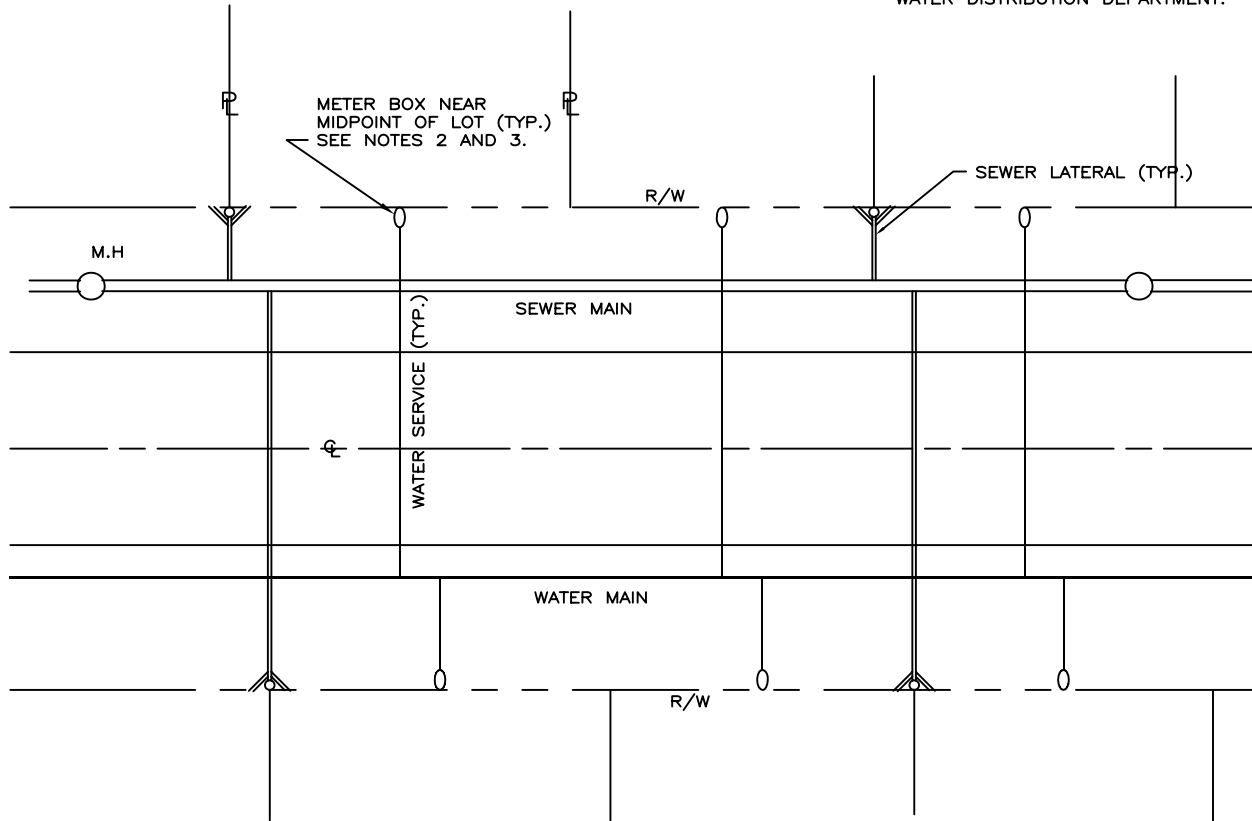


- NOTES:
1. METER BOXES SHALL TYPICALLY BE PERPENDICULAR TO RIGHT-OF-WAY LINE.
 2. METER BOXES SHALL BE INSTALLED OUTSIDE OF ANY PAVED SURFACE.
 3. EXCEPTIONS TO NOTES 1 AND 2 MUST HAVE WRITTEN APPROVAL FROM THE WATER DISTRIBUTION DEPARTMENT.



TYPICAL WATER SERVICE LOCATION

CHARLESTON COMMISSIONERS
OF PUBLIC WORKS

TYPICAL WATER SERVICE LOCATION

APPROVED BY: CPW	DATE: MAR 2000	DRAWING NO. 23
SCALE: NTS	REVISED: SEP 2008	